

2024 Minnesota Food Shelf Visits



Food shelf data is collected by The Food Group in partnership with the Minnesota Department of Children, Youth, and Family.

m DEPARTMENT OF CHILDREN,
YOUTH, AND FAMILIES



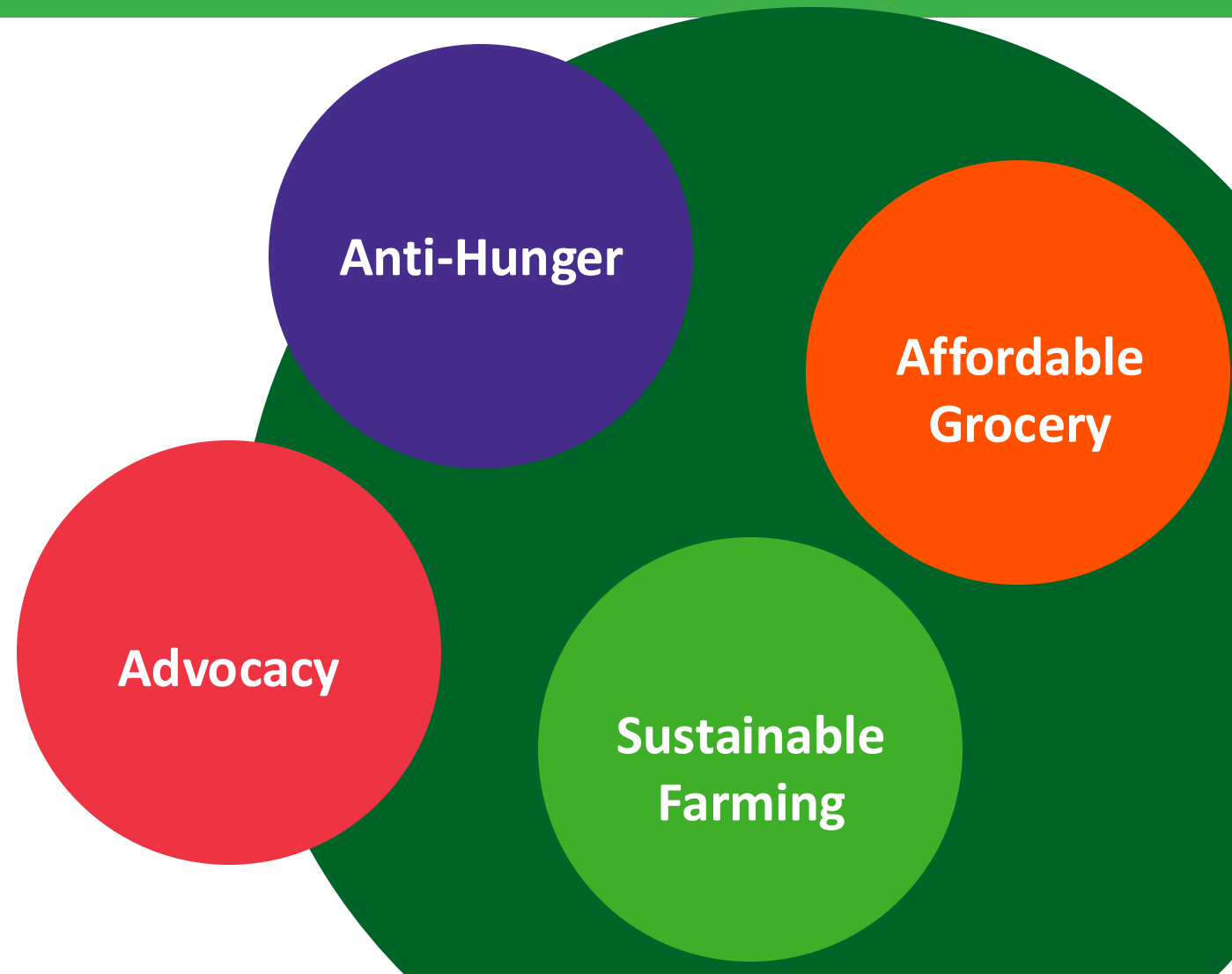
How We Do Our Work

Fighting hunger. Nourishing our community.

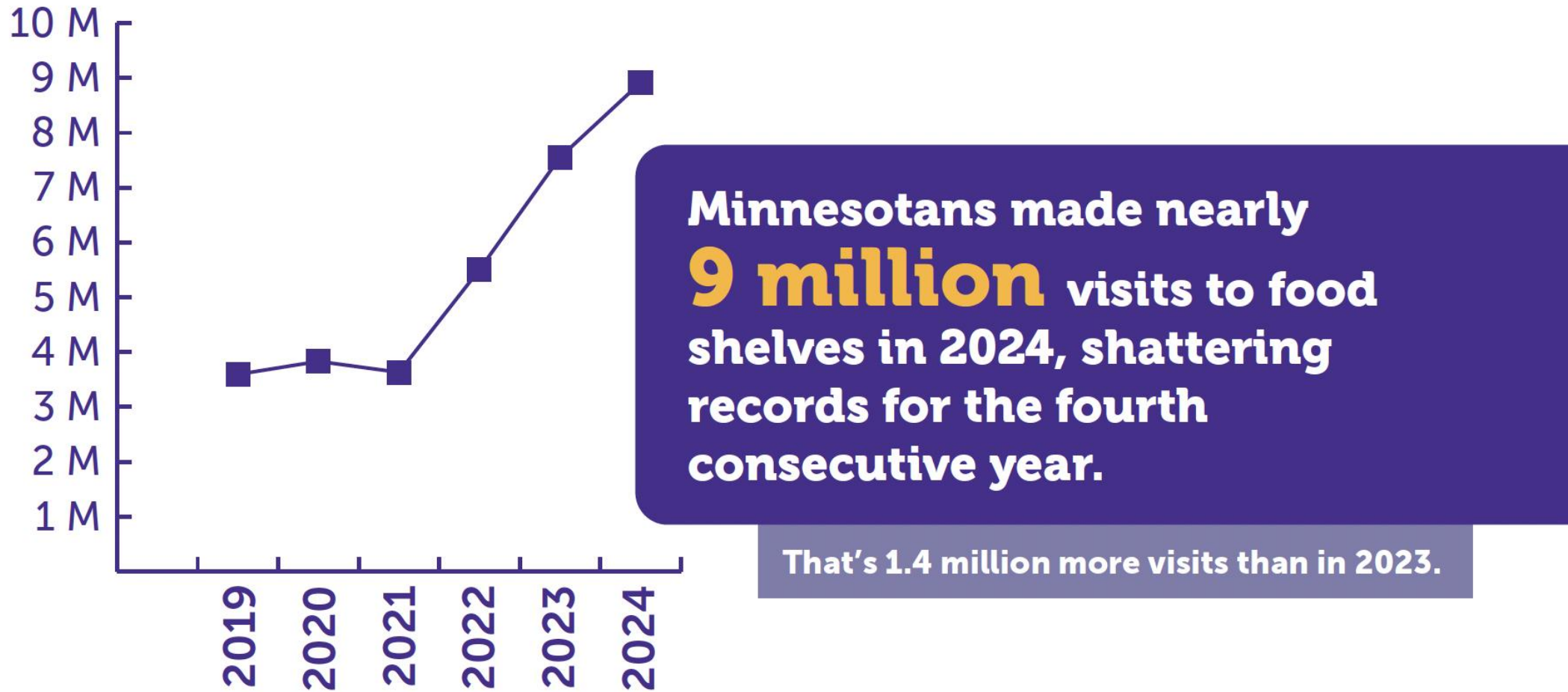
The Food Group is a local food equity non-profit. For nearly 50 years, we have worked to provide food for today and change for tomorrow for neighbors who need it most in our community. We work at the intersection of food access, equity, and nutrition statewide.

The Food Group is proud Hunger Solutions became part of our organization in 2024.

Food shelf data is collected by The Food Group in partnership with the Minnesota Department of Children, Youth, and Family.



Minnesotans Made 8,914,000 Visits to Food Shelves in 2024

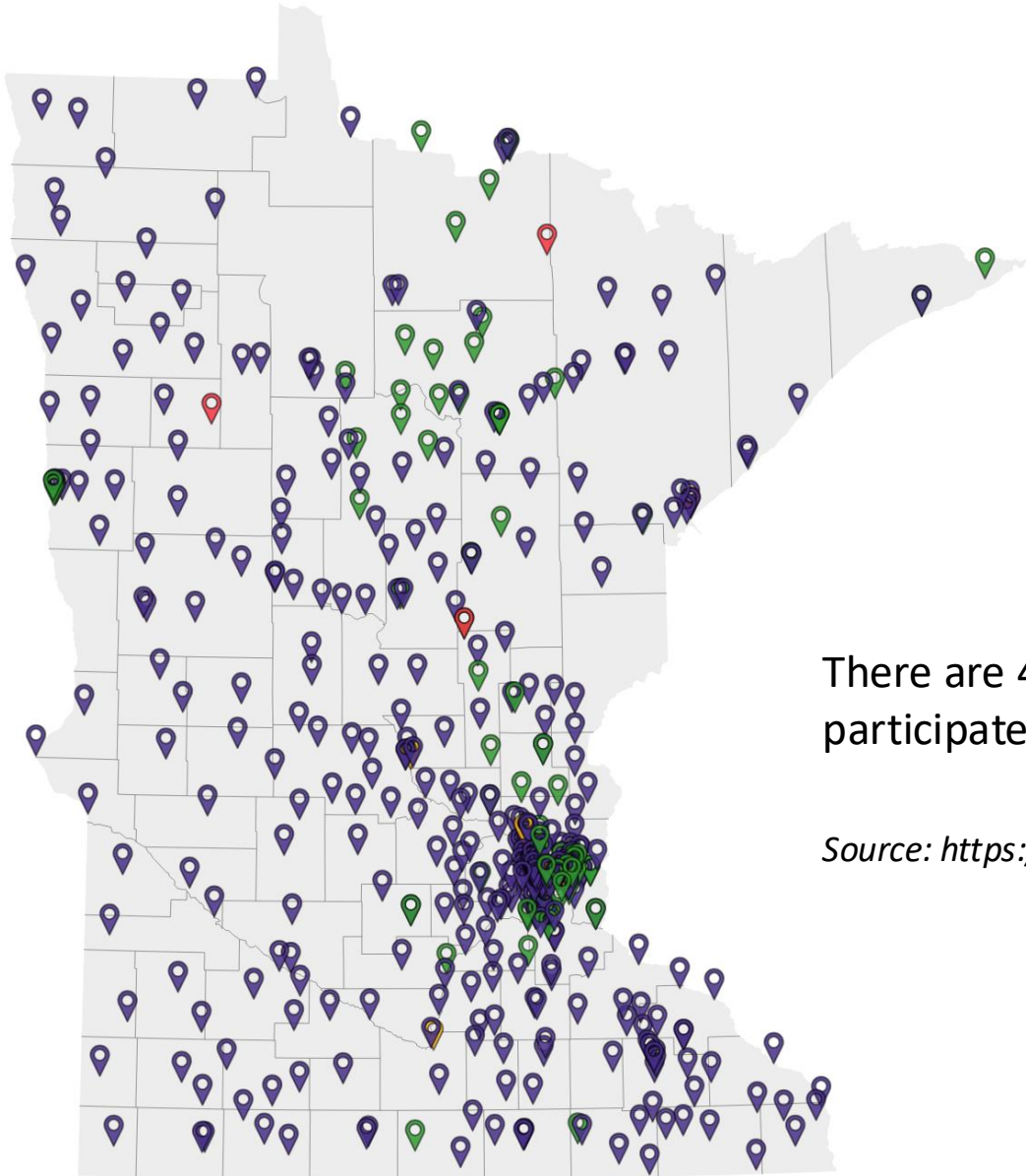


Minnesotans made 2.5x more visits in 2024 than pre-pandemic 2019.

Food shelf data is collected by The Food Group in partnership with the Minnesota Department of Children, Youth, and Family.

TEFAP Food Shelf Locations

Agency or Tribal Nation Brick and Mortar Site College Campus Program Outreach Program
Tribal Program



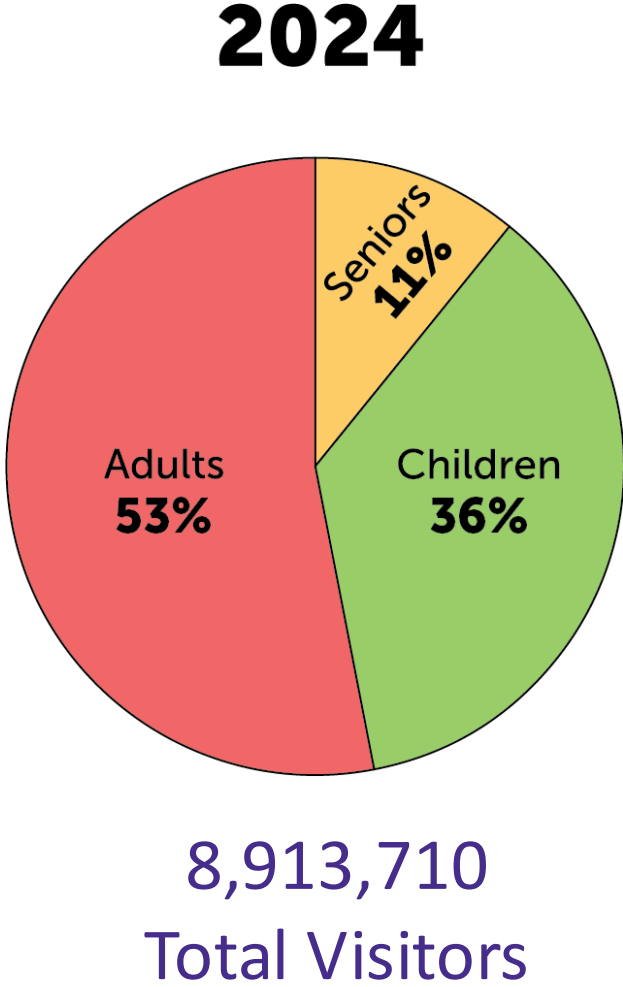
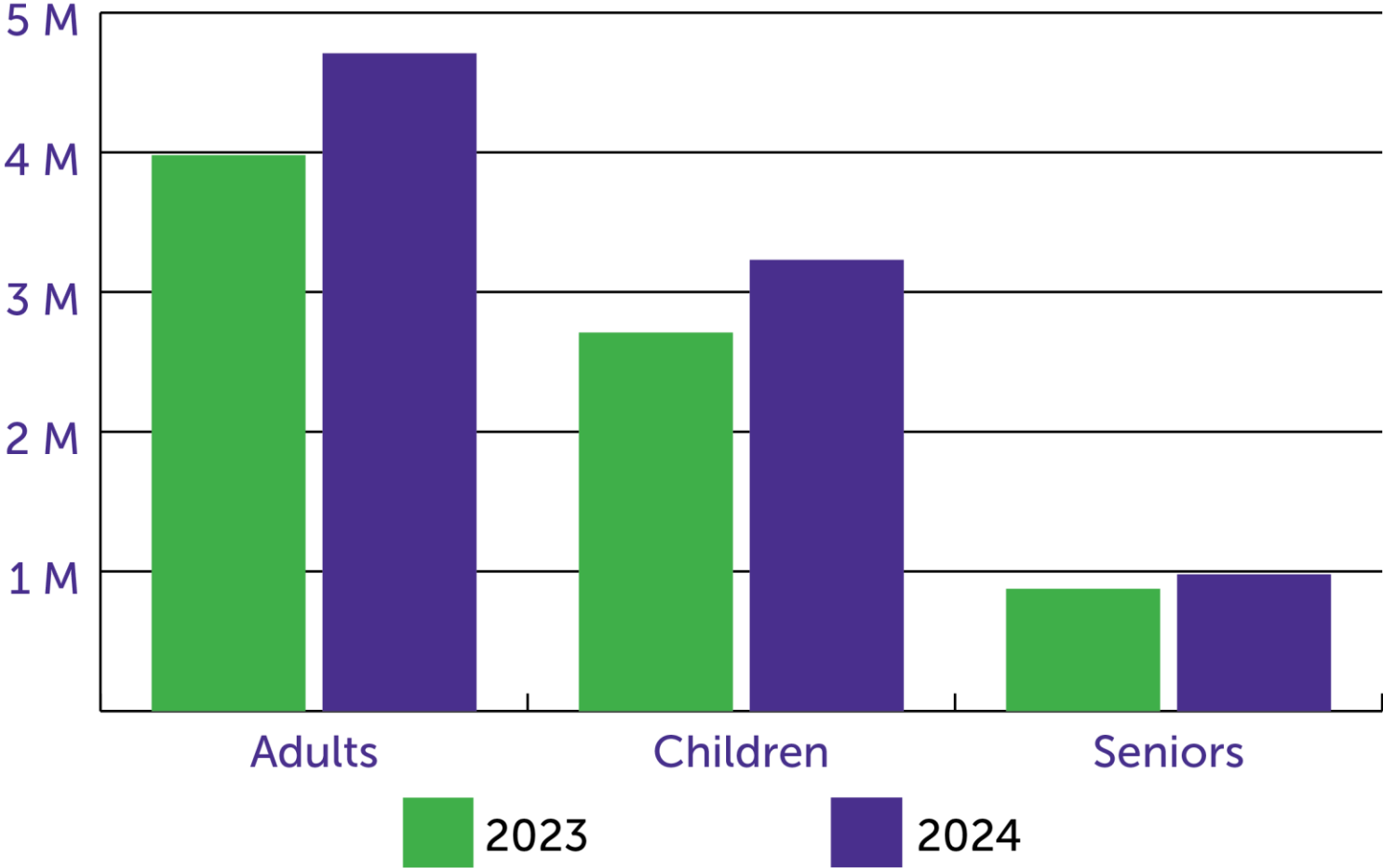
Minnesota Food Shelf Locations

There are 487 food shelves, mobile, and tribal programs that participate in TEFAP throughout Minnesota.

Source: https://www.datawrapper.de/_/hjRTr/

Food shelf data is collected by The Food Group in partnership with the Minnesota Department of Children, Youth, and Family.

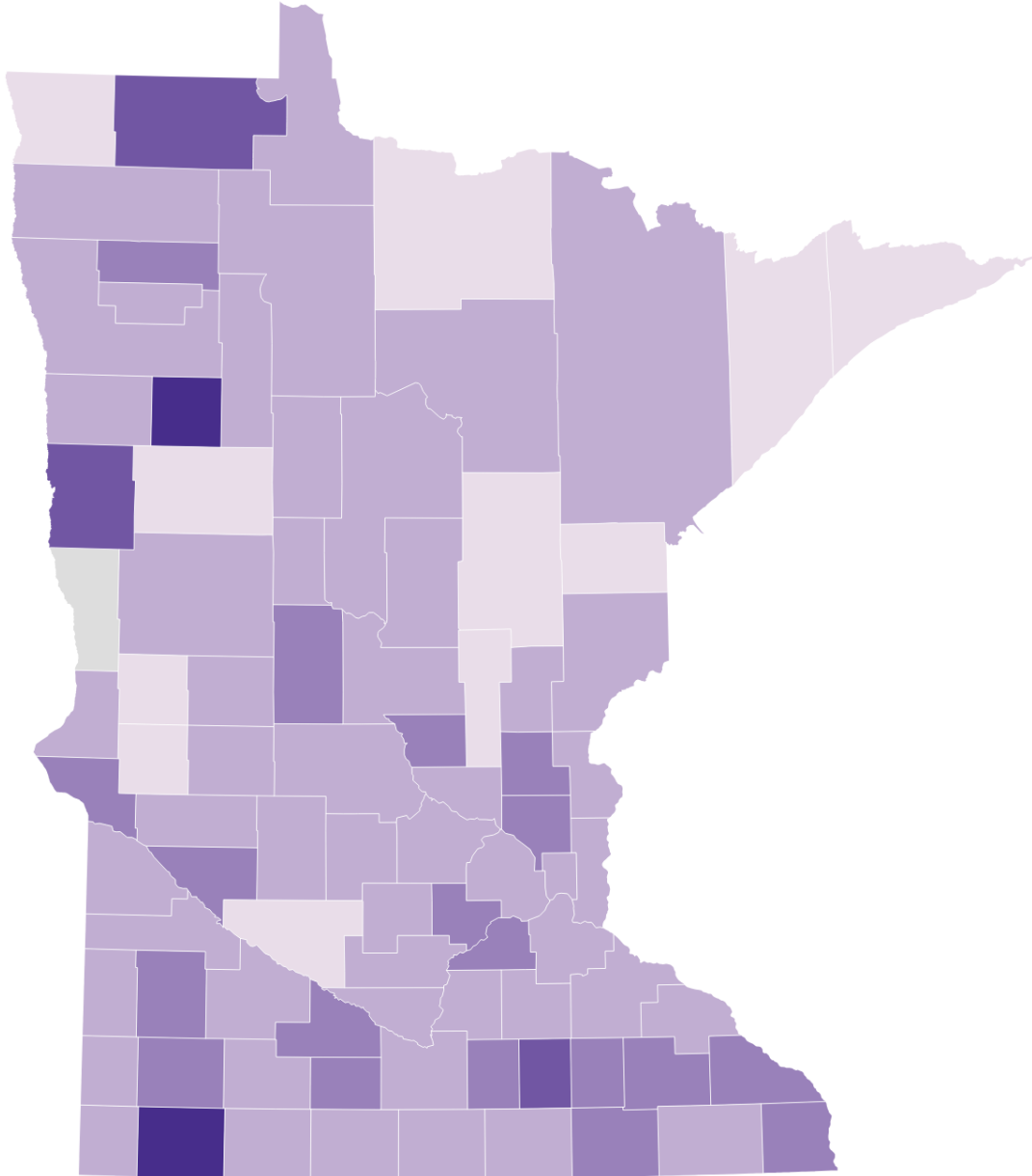
Who is Visiting Minnesota Food Shelves?



Food shelf data is collected by The Food Group in partnership with the Minnesota Department of Children, Youth, and Family.

% change in visits 2023 to 2024

< 0.0% 0.0%–25.0% 25.0%–50.0% 50.0%–100.0% ≥ 100.0%



Source: The Food Group • Created with Datawrapper

Food Shelf Visits Rose Statewide

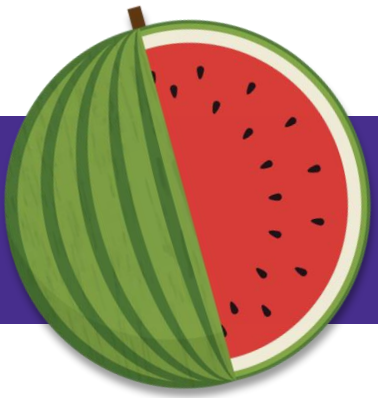
Largest changes by county increases.

County	Difference
Nobles	194.1%
Mahnomen	102.6%
Roseau	63.1%
Steele	53.2%
Clay	51.2%
Big Stone	49.2%
Carver	49.1%
Waseca	43.7%
Olmsted	39.4%
Chippewa	37.9%



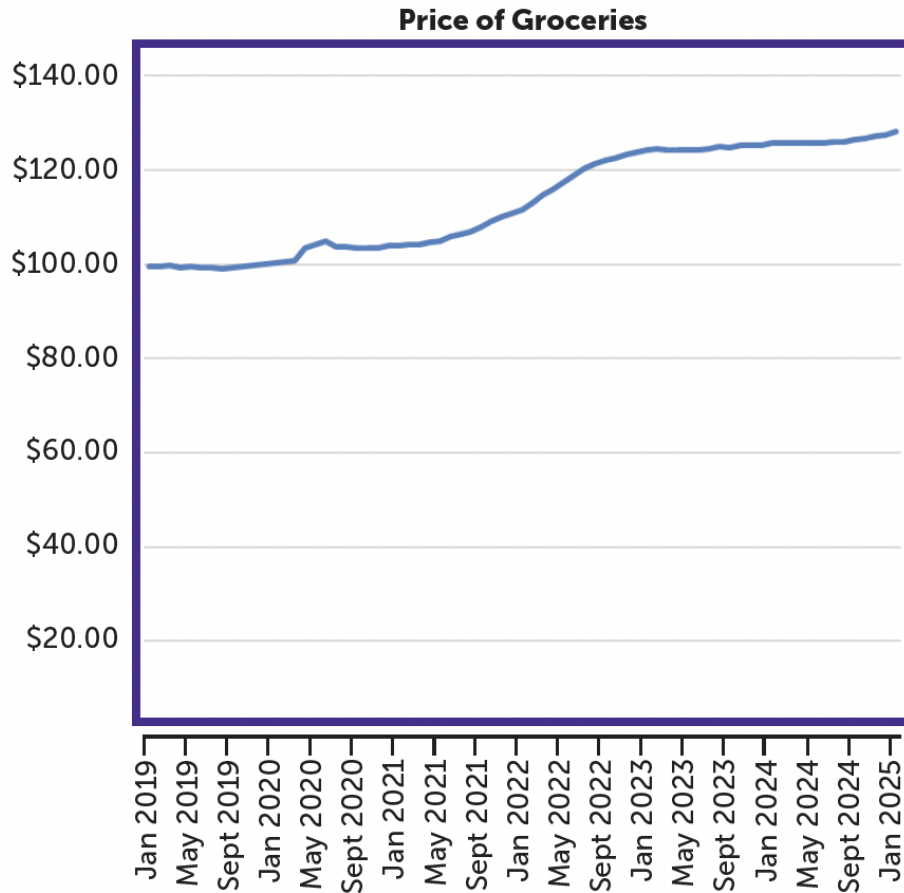
Source: https://www.datawrapper.de/_/23KnK/?v=2

Food shelf data is collected by The Food Group in partnership with the Minnesota Department of Children, Youth, and Family.



What is Driving The Need?

Food prices remain high, driving increased need.



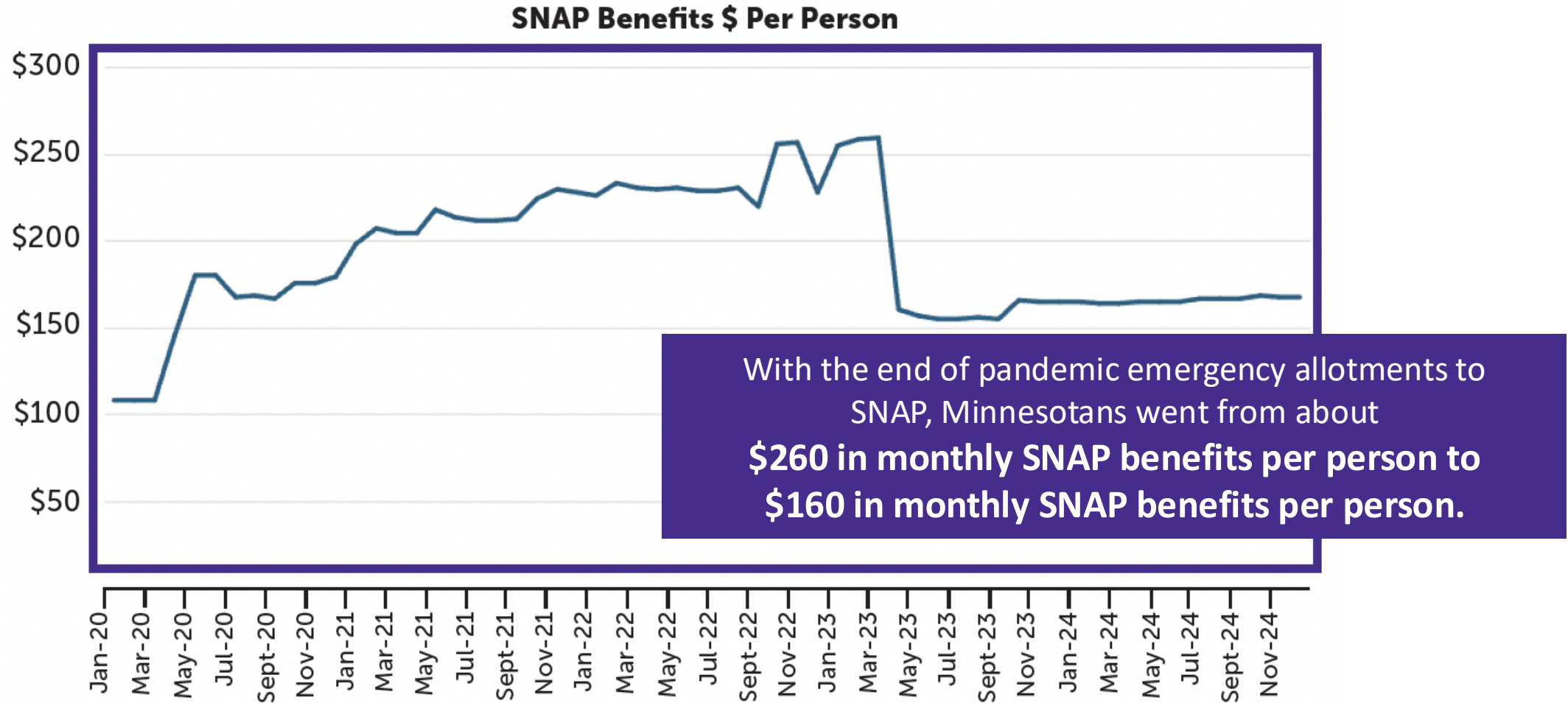
That's a
28%
Increase
from 2019.

Source: Consumer Price Index for All Urban Consumers: Food at Home in U.S. City Average, Index Dec 2019=100, Monthly, Seasonally Adjusted

<https://fred.stlouisfed.org/series/CUSR0000SAF11#>

Food shelf data is collected by The Food Group in partnership with the Minnesota Department of Children, Youth, and Family.

Pandemic Emergency SNAP Ends



Source: DCYF Supplemental Nutrition Assistance Program (SNAP) and state-funded food - statewide and county level statistics, by month <https://mn.gov/dhs/general-public/publications-forms-resources/reports/financial-reports-and-forecasts.jsp>

Additional Contributing Factors Driving Need



Housing & Economic Insecurity



High Food Costs



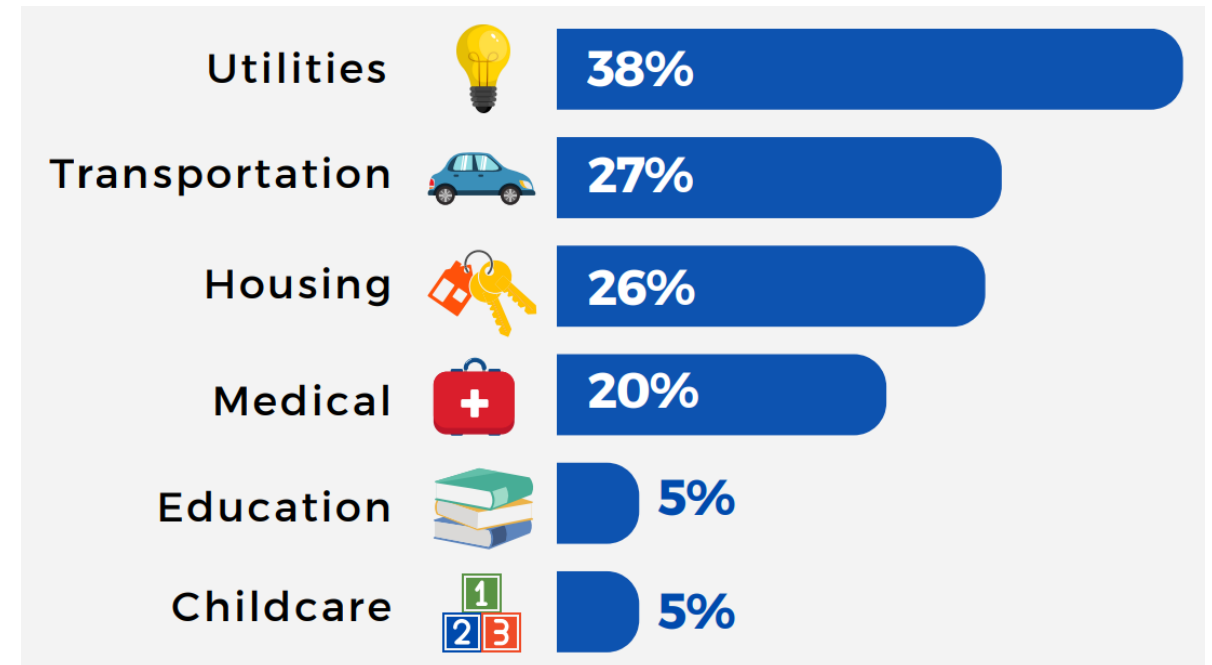
Multiyear COVID-19 Impact



Barriers to Food Access

Competing Budget Priorities

IN 2022, PEOPLE SAID THEY HAD TO CHOOSE BETWEEN FOOD AND...



Source: <https://www.supershelfmn.org/minnesota-statewide-survey>

Food shelf data is collected by The Food Group in partnership with the Minnesota Department of Children, Youth, and Family.



Looking Ahead –
Looming uncertainty, threats to
SNAP

Attention Clients
5 5 5
Number of choices
from whole shelf
UMH

MEALS & SIDES
COMIDAS EN CAJA O EN LATA

GRAINS
GRANOS

MEAT
CARNE

FRUITS & VEGETABLES
FRUTAS Y VEGETALES

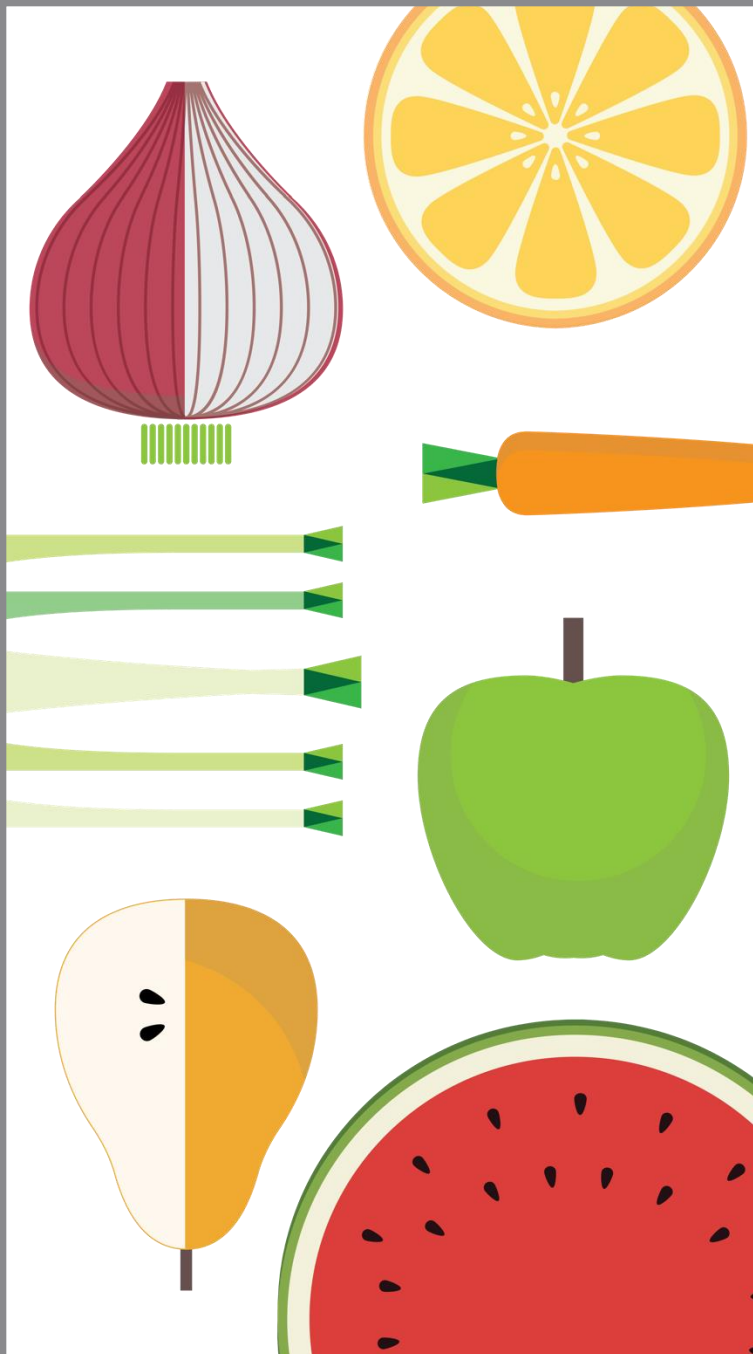
Choices Per Unit
2 2 2

MEALS & SIDES
COMIDAS EN CAJA O EN LATA



Questions?

The Food Group can also help facilitate getting connected to a food shelf in a specific region.



Contact



Sophia Lenarz-Coy

Executive Director, The Food Group

Phone: 763.450.3864

Email: slenarzcoy@thefoodgroupmn.org

Food shelf data is collected by The Food Group in partnership with the Minnesota Department of Children, Youth, and Family.

mn DEPARTMENT OF CHILDREN,
YOUTH, AND FAMILIES